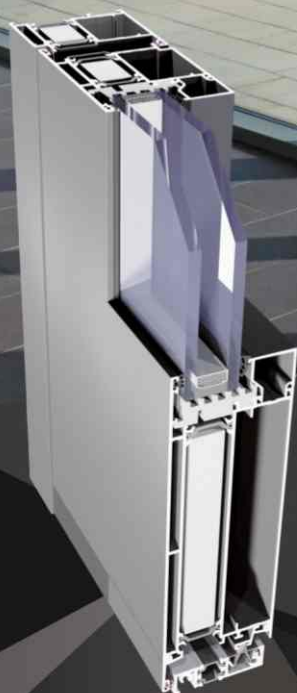


IP 800 i+

IMPERIAL 800 i+



A three-chamber door system designed for doors with high thermal insulation parameters.

IP 800 i+

A door system designed for designing doors with high thermal insulation parameters.

The system is compatible with Imperial system - thanks to adaptive profiles designs in series IP 800 can be integrated with Imperial shop windows.

The system features very good anti-burglary properties (the lock is situated far from the outer side).

A thermal insulation threshold is used, which can be disassembled following door installation in the frame.

The system offers solutions preventing catching of fingers (antyfinger).

The option of bending profiles (detailed specification of profiles and detailed technical parameters of profile bending process are available in the authorisation zone of the website www.aliplast.pl).

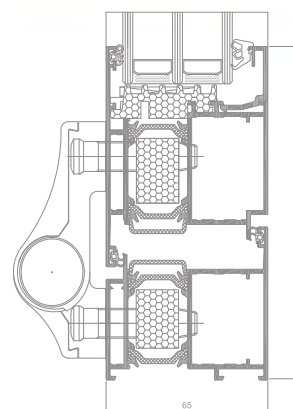
The system IP 800 is also available in the variant with improved thermal insulation power:

- IP 800 i
- IP 800 i+

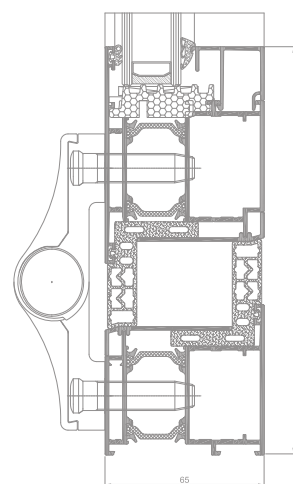
which was achieved by applying special thermal inserts slide between thermal separators and around the glass panel. Such a solution improves the insulating power of the profile by 0,2 – 0,5 W/m²K.

There is possibility of use Flyscreen system (Flyscreen – fly screens are a practical and an extremely functional protection against insects).

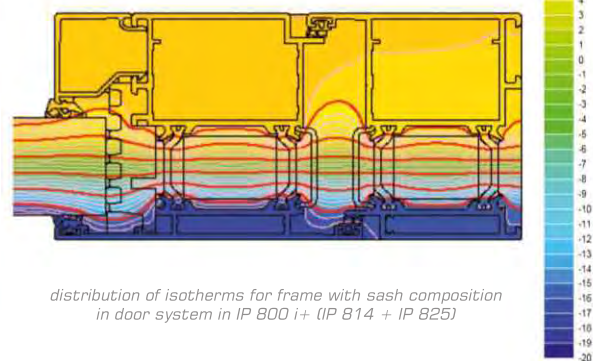
Wide range of colours – RAL palette (Qualicoat 1518), texture colours, Aliplast Wood Colour Effect (wood-like colours), Aliplast Loft View – colours imitating stone surfaces (Qualideco PL-0001), anodized colour (Qualanod 1808), bi-colour.



IP 800 i+ door section



IP 800 i antyfinger solution door section



distribution of isotherms for frame with sash composition in door system in IP 800 i+ (IP 814 + IP 825)

TECHNICAL SPECIFICATION

SYSTEM	MATERIAL	DEPTH OF FRAME	DEPTH OF LEAF	GLAZING RANGE	MAXIMUM WINDOW SIZES	MAXIMUM DOOR SIZES
IP 800	aluminium / polyamid	65 mm	65 mm	14-51 mm	—————	single-leaf door 1300 x 2800 mm double-leaf door 2500 x 2600 mm
IP 800 i+	aluminium / polyamid	65 mm	65 mm	14-51 mm	—————	single-leaf door 1300 x 2800 mm double-leaf door 2500 x 2600 mm

PERFORMANCE

SYSTEM	THERMAL INSULATION Uf *	AIR PERMEABILITY	WINDLOAD RESISTANCE	WATERTIGHTNESS
IP 800	Uf from 1,84 W/m ² K	Class 4; EN 12207	Class CE 2400; EN 12210	Class 8A; EN 12208
IP 800 i+	Uf from 1,67 W/m ² K	Class 4; EN 12207	Class CE 2400; EN 12210	Class 8A; EN 12208

* Thermal insulation is dependent on a combination of profiles and thickness of the filling.